



Clark Electric Cooperative

Your Touchstone Energy® Partner 

CAPITAL CREDIT RETIREMENT

54th Consecutive Year – Benefits From Your Cooperative
Demonstrating the 3rd Cooperative Principle



Tim Stewart,
CEO/Manager

It is my privilege to announce that the Clark Electric Cooperative Board of Directors approved \$832,182 capital credit general retirement to be made this year. This marks the 54th consecutive year that a capital credit retirement has been made, totaling \$23,512,221 being returned to the membership since inception.

As a rural electric cooperative member, you are part owner of Clark Electric Cooperative. Basically,

you've pooled your money with thousands of other members and created equity for your rural electric cooperative to deliver you electricity and to provide services at an affordable cost.

As a locally owned business, Clark Electric Cooperative is committed to the people, businesses, and communities we serve. Because we are member owned and operated, one of the fundamental principles we follow is a commitment to returning your investment. This is done in the form of capital credits. Since Clark Electric Cooperative operates on a



not-for-profit basis, we return margins to members and former members through the capital credit allocation and retirement process. The amount returned is in relation to the individual member's transactions with the cooperative. Capital credits

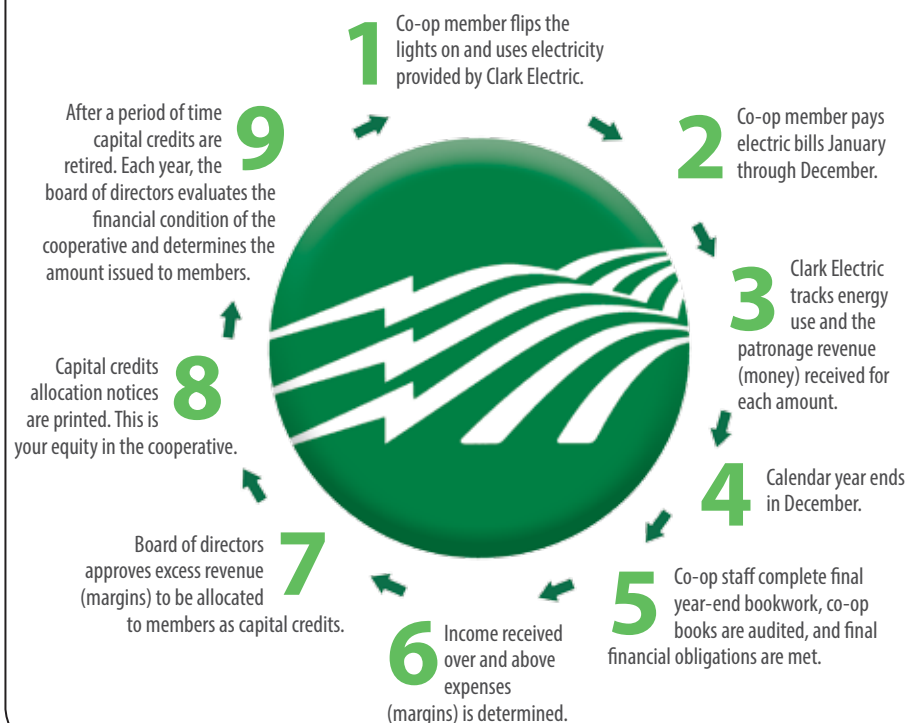
are returned to cooperative members on a rotating schedule. Currently the cooperative is retiring 4 percent of our allocated capital and applying that amount against the oldest capital credits assigned to the members. This retirement will affect the cooperative's capital credits assigned in 1994, 1995, and the Dairyland Power Cooperative capital credits assigned for 1989.

Our goal is to provide you with electricity at a price that is as close to cost as possible. We don't aim to maximize profits like investor-owned utilities do. This way, more of your money stays in your pocket—up front. In short, you are receiving a vital resource, electricity, from a business owned and operated by you, your friends, and neighbors. Working together, we provide you with the highest level of service we can while striving to keep your electric bills affordable.

And that's the cooperative difference!

(Continued on page 16)

Capital Credit Cycle



MY CO-OP



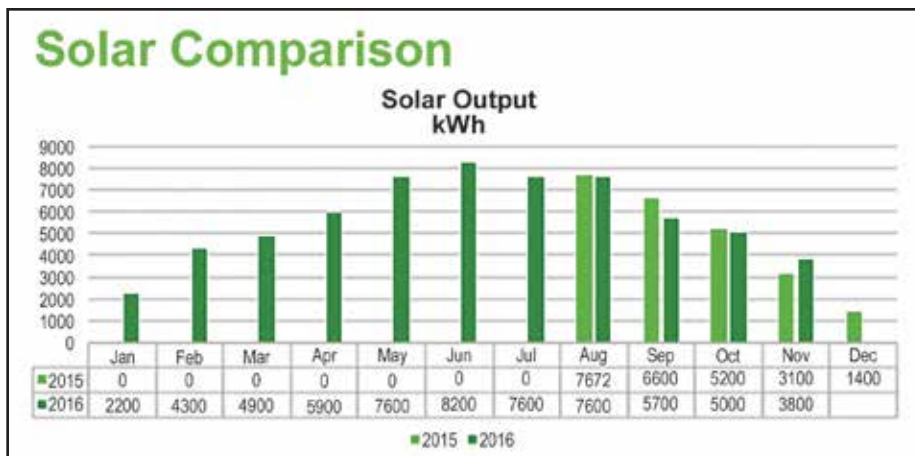
Clark Electric Cooperative offers easy, affordable way to invest in solar energy

As I have reported in past articles, the Clark Electric Cooperative Board of Directors approved the construction of a 53.3 kW solar garden, which is located adjacent to the cooperative's headquarters facility just west of Greenwood. The solar garden became operational in July 2015, and I am pleased to report that on a year-to-date basis, the output of the array is meeting projections.

This community solar project provides members the opportunity to purchase local renewable energy through a cooperative program. This in turn allows members to take more control of their power choices. Through aggregation, we are able to offer a highly competitive solar product to our membership.

The community garden is designed for those members interested in an affordable option to purchase renewable solar energy. Members have the opportunity to purchase a subscription unit and receive credit equal to their share of the array's output on their electric bill.

By utilizing a solar garden approach, issues such as inadequate space for solar panels near your home, too many trees



that would block the sun at your residence, cost of a small PV array, installing panels on your rooftop, insurance, interconnection of the PV system to the grid, and unsightly panels at your residence all go away. In addition, all operations and maintenance issues would be handled by Clark Electric Cooperative. Any residential/seasonal member, regardless of whether you own or rent your home and where you live, who pays a monthly electric bill to Clark Electric Cooperative could be a potential candidate for participating in the community solar project.

How do I participate?

It's easy. Just give us a call and

request a Subscription Agreement and a listing of Frequently Asked Questions. Sign and indicate how many participation units you would like to buy. Return the signed agreement, along with a payment of \$864.80 per subscription unit. Once the unit(s) are paid for, there are no fees assessed to you during the life of the agreement (23 years). You will start getting credits to offset your electric bill beginning with the month after you sign up. We still have a limited number of Subscription Units left but when they are gone, they're gone. You can also go to our website www.cecoop.com for information on the Solar Garden Project and see the actual array in real time.



Statewide Recognition – Clark Electric was recognized at the recent Wisconsin Electric Cooperative Association (WECA) annual meeting in Stevens Point. At left, CEO Tim Stewart (right) is presented a clock for his service on the WECA board of directors from WECA Board Chairman David Paudler. Stewart's term (2010–2016) expired at the WECA annual meeting. At right is Clark Electric Director Herman Seebandt accepting an award for the co-op's participation in ACRE (Action Committee for Rural Electrification) from national ACRE Chairman Robert Kretzschmar. Clark was recognized for 100 percent board and management participation, with 100 percent Management Century Club.

WELCOME, NEW EMPLOYEES

Clark Electric Cooperative recently welcomed three new apprentice linemen to the Line Department.

Jonny Hilbert, from Barron, graduated from CVTC in Eau Claire with a degree in Electrical Power Distribution in May 2016. Jonny worked as a summer help, 1,000-hour employee for Clark Electric in 2016 and was hired full time on November 1. He enjoys hunting, fishing, golf, hockey, shooting trap, and trapping in his free time.

Jared Jensen, from Owen, graduated from CVTC in May 2016 with a degree in Electrical Power Distribution. He worked as a 1,000-hour employee for the cooperative in 2016 and was hired full time on November 1. Jared enjoys hunting, fishing, snowmobiling, truck pulling, and anything that takes him outdoors. He looks forward to serving the Clark Electric members and community.

Konner Kitzhaber, from Greenwood, graduated from CVTC in May 2015 with a degree in Electrical Power Distribution. He worked as a 1,000-hour employee in 2015 and 2016 and was hired full time on November 1. Konner enjoys hunting, fishing, and the outdoors.



Clark Electric welcomes these new linemen, left to right: Jonny Hilbert, Jared Jensen, and Konner Kitzhaber.

THE HEATING SEASON IS HERE!

GEO THERMAL

When COMFORT Matters

Looking for an efficient, cost effective and environmentally friendly heating and cooling system? A geothermal heat pump is the greenest system available. Geothermal systems don't emit carbon dioxide, carbon monoxide or other greenhouse gasses that can be harmful to the environment or, more importantly, your family. Save money and rest easy knowing your family will be comfortable and safe.



Check out our heating maintenance programs
SPECIAL PRICING OF \$99 FOR A LIMITED TIME





tthergeo.com



Clark Electric Appliance & Satellite, Inc.
 Your Touchstone Energy® Partner

Call for all of your alternative heating needs today!

1209 West Dall-Berg Road, Greenwood, WI 54437 • 715-267-6544 • 866-279-6544

ENERGY ASSISTANCE AVAILABLE

The winter heating season is underway. It's important for you to make every attempt to keep current on your electric bill. We understand that things do happen that put financial burdens on people. Certain government organizations can offer heating assistance or point you in the direction of a group that can help.

The Wisconsin Home Energy Assistance Program (WHEAP) administers the federally funded Low Income Home Energy Assistance Program (LIHEAP) and Public Benefits Energy Assistance Program. LIHEAP and its related services help more than 230,000 Wisconsin households annually.

Eligibility

You may be eligible for weatherization services if:

- You received benefits from WHEAP or your gross income for the last three months is equal to or less than 60 percent of Wisconsin's state median income (SMI) for your family size.
- Your dwelling/apartment has not been weatherized before.
- Your household meets certain priorities that may include a high energy burden or use, an elderly or disabled member, or a child under six.

For more information and application details, please contact your local office:

Clark County	715-743-5233
Department of Social Services	
Chippewa County	715-726-7862
Department of Human Services/ Economic Support	
Marathon County	715-842-3111
Energy Services, Inc.	

(Continued on page 18)



SCHOLARSHIP APPLICATIONS AVAILABLE

Clark Electric Cooperative is once again offering a scholarship opportunity to graduating students



from participating high schools in our service area. One \$500 scholarship will be available for a student from each school or group of schools in our service area.

To be considered for the scholarship, the student's parent or legal guardian must be a member of Clark Electric Cooperative and currently receive electric service from Clark Electric Cooperative.

The Clark Electric Cooperative scholarship program began in 1995. Since its inception we have provided more than \$201,000 in scholarships to area students. An independent scholarship committee judges the applicants based upon merit.

Giving back to the community is one of the cooperative principals; furthering the education of our area youth is another. Clark Electric is proud to help these fine young people meet their educational goals.

Applications are available from your high school counselor, online at www.ccecoop.com, and at our office located at 1209 W Dall-Berg Rd., Greenwood.

All applications must be returned to the cooperative office by 5 p.m. Monday, March 6, 2017.

Schools Eligible for Scholarship Consideration

Abbotsford High School, Colby High School, Granton High School, Greenwood High School, Loyal High School, Neillsville High School, Owen-Withee High School, Spencer High School, Thorp High School, Stanley High School

One Scholarship Between These Grouped Schools:

Stratford High School, Columbus High School, Osseo-Fairchild High School, Abbotsford Christian Academy

Marshfield Senior High School, Medford High School, Gilman High School, Pittsville High School, Home School Student

If you have any questions, please contact Tracy Nelson, administrative assistant at 715-267-7958 or 1-800-272-6188.

These scholarships are financed through the Federated Youth Foundation Scholarship Program, which is funded from unclaimed capital credits. Federated Youth Foundation (FYF) is a non-profit charitable foundation serving cooperative across Wisconsin.

Energy Assistance (Continued from page 17)

Taylor County 715-748-6123
Human Services Department

Wood County
Department of Social Services
Wisconsin Rapids office 715-421-8600
Marshfield office..... 715-387-6374

Jackson County 715-284-4301
Department of Health & Human Services

To learn more or to locate your local agency, call toll free 1-866-HEATWIS (432-8947) or visit homeenergyplus.wi.gov. Other Resources for Energy and Weatherization Programs—**CEC Website:** www.ccecoop.com, click the Bill Payment Tab and then the energy assistant link; **Focus on Energy Targeted Home Performance with ENERGY STAR®:** 1-800-762-7077 or visit www.focusonenergy.com; **Keep Wisconsin Warm Fund – Bill Pay Assistance:** 1-800-981-WARM (9276) or visit www.kwwf.org. (Source: Wisconsin Department of Administration Brochure)



FIRST CALL
Medical Monitoring

Independent living without leaving the comfort of your home. That is what we provide. Call us today to have your 24/7 personal emergency response system installed in your home.

CLARK ELECTRIC APPLIANCE & SATELLITE
1209 W. Dall-Berg Rd. • Greenwood, WI 54437
866-279-6544 • 715-267-6544
HOURS: Monday-Friday 8 a.m. to 4:30 p.m.

Tim Stewart, CEO/Manager

1209 West Dall-Berg Road, P.O. Box 190, Greenwood, WI 54437
email us at info@ccecoop.com or tnelson01@ccecoop.com
www.ccecoop.com



Clark Electric Cooperative

Your Touchstone Energy® Partner