



**Clark Electric
Cooperative**

Your Touchstone Energy® Partner 



Tim Stewart,
CEO/Manager

ANNUAL MEETING AND LINEMAN APPRECIATION DAY

Our Annual Meeting is now only days away, and I hope you have Wednesday, April 11, marked on your calendars and are planning to attend. Members will hear reports about the cooperative and the electric industry, review financials,

conduct business, and elect your representative to serve on the board of directors.

The members will be asked to elect three directors for three-year terms. Director terms expiring this year are those of Charles Bena from the Town of Mead, Herman Seebandt from the Town of Weston, and Marvin Verkuilen from the Town of Worden. Directors Seebandt and Verkuilen are eligible for re-election. Director Bena has reached his term limit and is not eligible for re-election. Nominations for the director positions are taken from the floor of the meeting.

The cooperative's bylaws establish the minimum qualifications for being a director. A copy of the bylaws is available on the cooperative's website at www.cecoop.com or by contacting the business office at 715-267-6188. We hope to see you there.

The Monday preceding our Annual Meeting, April 9, 2018, has been designated National Lineman Appreciation Day. This is a day to honor the dedicated line workers who often work in challenging conditions to keep the lights on. We proudly

recognize all electric linemen for the services they perform around the clock in dangerous conditions to keep power flowing and protect the public's safety.

We've got a great group of linemen here at Clark Electric Cooperative who work tirelessly here in Clark, Chippewa, Jackson, Marathon, Wood, and Taylor counties. When the weather gets nasty and most of us hunker inside, our linemen head out, no matter what time of day, or day of the week it might be. Our line workers are the first responders of our electric distribution system, and they work around the clock on high-voltage lines. Conditions can be dangerous, but they power through to ensure reliable service for our members.

Not only do they work hard to keep the lights on in our own community, but our line crews also stand ready to answer a call for help from beyond our counties' borders. Electric cooperatives have a mutual aid agreement called Restoration of Power in an Emergency (ROPE), whereby cooperatives assist one another in times of emergencies. We've answered the call many times around Wisconsin and also other states like Louisiana during Hurricane Katrina and most recently Florida during Hurricane Irma.

On April 9, 2018, when you flip a light switch, power up your computer, turn on your TV, or perform any of the countless tasks that electricity enables you to, take a moment to appreciate the hardworking linemen who make that possible.



APRIL 9 IS LINEMAN APPRECIATION DAY





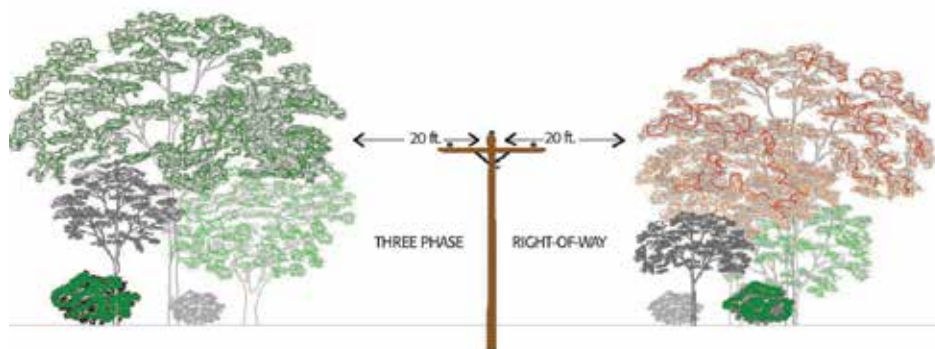
CONSIDER POWER LINES WHEN PLANTING TREES THIS SPRING

With the winter season in the rear view mirror, the smell of spring in the air, and thoughts of green grass comes the planting season.

Whether you're planting a single tree in the front yard or several thousand trees to start a plantation, it's important to consider the species of trees and the location in which you plan to plant them. This is especially important if you are planting trees near overhead power lines, says Mike Ruff, director of operations. Many people plant trees too close to power lines. They think that the trees will never get tall enough to grow into the power lines, or they simply forget to look up before they plant them.

Most trees will grow tall enough to touch power lines faster than you think. So take time to research your tree selection or consult with your local tree nursery for advice on which trees are appropriate for your landscaping area.

As the trees grow they can come into contact with the power lines and create power outages or momentary interruptions. However, the greatest concern is the safety risk that can be created when children climb trees near power lines.



Accidental contact with electrical wires while playing in or climbing a tree can be fatal.

As we move through the spring season and into summer, please take some time to consider a few things when planting, especially around power lines.

1. Clark Electric Cooperative requires 15 feet of clearance on both sides of the line for single-phase lines and 20 feet for three-phase lines.
2. Be sure to plant your trees far enough away from power lines so that when the trees are fully grown, there will still be 20 feet of clear-

ance to the power line without the need for trimming.

3. Remember, if you chose to plant trees in the right-of-way or too close to the right-of-way, your trees may need to be trimmed or cut some day, and that day may come sooner than you think.

If you have trees that appear to be growing into power lines, contact Clark Electric Cooperative at 1-800-272-6188. Never try to prune them yourself. We have skilled professionals trained to safely prune and trim trees for electric line clearance.

DAIRYLAND POWER COOPERATIVE'S ANNUAL MEETING SET FOR JUNE 6

We're looking for 11 delegates, four alternates

Representing your cooperative and your fellow members at various meetings is an opportunity that we ask our members to participate in every year.



The Dairyland Power Cooperative Annual Meeting will be held on Wednesday, June 6, 2018, in La Crosse. We are seeking 11 delegates and four alternates for this meeting.

By attending this meeting and serving as a delegate for your cooperative, you help keep Clark Electric Cooperative strong and prosperous.

If you would like to represent Clark Electric Cooperative at Dairyland Power's annual meeting, please contact Tracy Nelson, administrative assistant, by Monday, March 26, 2018.

Tracy can be reached by calling the cooperative office at 715-267-6188 or at 800-272-6188.



*Planning a home improvement project? Planting a tree?
Installing a fence or deck?*

Call BEFORE you dig!

Call Diggers Hotline at 811 or 800-242-8511 to have underground lines and cables located before you start your project. It's free, and it could save you from injury and/or costly damage!

2018 YOUTH LEADERSHIP PARTICIPANTS NEEDED

High School Students Can Experience College Life at UW-River Falls

It's that time of year when Clark Electric Cooperative is looking for students from local high schools to represent us at this year's Youth Leadership Congress to be held on the campus of UW-River Falls July 25–27, 2018.

The WECA Youth Leadership Congress (YLC) is a great opportunity for students to develop and enhance their leadership potential. The event is sponsored by UW-River Falls and Wisconsin electric cooperatives and is designed to develop leadership skills while learning the purpose, operation, and scope of cooperative business.

The event features leadership seminars lead by nationally acclaimed speakers and presenters focusing on the structure of the cooperative business, developing leadership skills, team-building exercises, and many other fun activities. Join students from your neighboring schools learn what makes the cooperative business model different and successful.

Clark Electric has sponsored students



to this event since its inception. We believe in developing the potential of tomorrow's leaders. The YLC is a fun and educational event, designed by students who were elected by their peers at the previous year's conference to serve on the WECA Youth Board.

There is no cost to the student for attending. The registration and travel

expenses will be covered by the cooperative. If you are going to be a sophomore or a junior in high school this coming fall and would like to be a sponsored representative for Clark Electric Cooperative, contact your FFA or FBLA advisor. You may also contact Tracy Nelson, administrative assistant, at 715-267-6188 or 1-800-272-6188.

MY CO-OP



...if in an auto accident involving power lines

In such an accident, your car and the surrounding area could be energized—causing a serious safety hazard.

- ✓ Do not leave the car, and warn passersby to stay safely away.
- ✓ Call your electric cooperative, or call 911 to have the utility notified.
- ✓ Stay in the car until a utility professional has told you it is safe to exit.
- ✓ The only reason you should leave the vehicle is if it is on fire. If this is the case, jump clear of the vehicle with your feet together and without touching it and the ground at the same time, and continue to hop away with your feet together as far as you can.



Energy Efficiency Tip of the Month



Periodically inspect your dryer vent to ensure it is not blocked. This will save energy and may prevent a fire. Manufacturers recommend using rigid venting material—not plastic vents that may collapse and cause blockages.

Source: U.S. Department of Energy

HVAC Rebates

- Geothermal Heat Pump \$650/ton
- Air Source & MiniSplit Heat Pump \$200/ton

Appliance Rebates (Energy Star)

- Clothes Dryer \$25
- Heat Pump Clothes Dryer \$50
- Clothes Washer \$25
- Dehumidifier \$25
- Dishwasher \$25
- Refrigerator \$25

Appliance Recycling

Must purchase new replacement appliance from Clark Electric & Satellite

- Recycling – Freezer \$25
- Recycling – Refrigerator \$25
- Recycling – Room Air Conditioner \$25

**Visit our website at www.cecoop.com for all rebate forms and qualification criteria. Rebate information can be found on the Welcome page under the News/Events at the bottom of the page or the Rebates/Incentives listing under the Billing & Rate Information page.

GEO THERMAL

It's all about the SAVINGS

Geothermal heat pumps don't create energy—they move the energy that's already there. That's how a geothermal heat pump can be 300–500% efficient! With a THERM GEO ground source heat pump, you can harvest the sun's energy stored in the earth and save big dollars on your heating and cooling bills.

- Save up to 70% on your energy costs
- Increase the resale value on your home or business
- Additional \$650 Focus on Energy Rebate may be available to qualifying existing homes while funds are available.

Residential GeoThermal 30% tax credits are back!

Check out our heating and cooling maintenance programs starting at \$99

THERM GEO

tthermgeo.com
Call for all of your alternative heating needs today!

Clark Electric Appliance & Satellite, Inc.
Your Touchstone Energy® Partner

1209. W Dall-Berg Rd., Greenwood, WI 54437 • 715-267-6544 • 866-279-6544

Tim Stewart, CEO/Manager

1209 West Dall-Berg Road, P.O. Box 190, Greenwood, WI 54437
email us at info@cecoop.com or tnelson01@cecoop.com
www.cecoop.com



Clark Electric Cooperative

Your Touchstone Energy® Partner