

NOTES FROM THE MANAGER



Dick Adler
CEO/General Manager

New CEO/ Manager Selected

The board of directors conducted an extensive search for a manager to succeed me when I retire at the end of 2004. Mr. Tim Stewart from Afton, Iowa, has agreed to become the new CEO/Manager.

Mr. Stewart has been a manager in Iowa for the past 10 years and will be a great addition to our Clark Electric family. Mr. Stewart will begin on Monday, August 2. Watch for additional information in upcoming issues.

Hospital Is Ours

The Wisconsin Public Service Commission ruled in our favor to continue serving Our Lady of Victory Hospital at Stanley. Xcel Energy filed a complaint against us with the WPSC because they felt the area where the new hospital was built belonged to their service area. Clark

Electric did have primary distribution facilities in the area at the time of annexation, which qualified us to serve the hospital if they chose us, which they did.

Farm Technology Days



GROWING PROGRESS THROUGH TECHNOLOGY

Farm Technology Days are scheduled for July 12–15, 2005, here in Clark County. The Robert & Mitch Malm Farm located north of the Greenwood and Loyal area (on Clark Electric's system) will be the host farm. I am serving on the Executive Committee for Utilities and Tent City. Regular meetings have been held and plans are progressing very well to prepare for this event. Many people have volunteered to help with this massive event. About 1,500 people are needed to help at some point in time before, during, or after this three-day event.

If you are interested in helping, please call the Clark County Extension Office, 743-5121, and ask to be put on the list of volunteers. Committees include: Grounds and Security, Parking and Admissions, Education Food, Site

Signage, Family Living, Traffic, Safety & First Aid, Home and Garden Education, Youth, Tent City, Field Demonstrations, Media Relations, Hospitality & Fundraising, Arts and Crafts, Small Acreage Ag Day, Antique Machinery, and History. It is a big event to showcase Clark County to all of Wisconsin. ■

Dick Adler
CEO/General
Manager



Our Lady of Victory Hospital located in Stanley, Wisconsin, on State Hwy. 29 and County Hwy. NN. The hospital has complete emergency services and rehabilitation services, along with a new dialysis unit.



Clark Electric Cooperative

2004 - 2005 Scholarship Winners \$750 Scholarship



Andrew Leiby
Abbotsford High School
UW-River Falls
Undecided



Tammy Rueth
Colby High School
Undecided
Business Administration



Korey Hansczak
Granton High School
UW-Stevens Point
Business



Kim Artac
Greenwood High School
Saint Cloud University
Nuclear Medicine



Sharon Rybski
Loyal High School
Mid-State Technical College
Surgical Technology



Amanda Meissner
Marshfield High School
UW-Eau Claire
Communications



Jacob Elmhurst
Neillsville High School
University of Dubuque
Elementary Education



James Cardinal
Owen-Withee High School
UW-Madison
Political Science



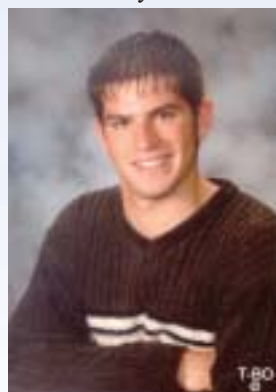
Angela Jacobson
Pittsville High School
UW-Marshfield
Psychology



Kari Ann Schmidt
Spencer High School
UW-Eau Claire
Communications



Alexandra Price
Stanley-Boyd High School
UW-Madison
Biology



Kevin Jacks
Thorp High School
UW-Stout
Undecided



Andrew Thain
Faith Christian Academy
Marquette University
Criminal Justice/Law



Althea Turner
Medford High School
Concordia University
Secondary Education



Amanda Stolp
Home Schooled
Chippewa Valley Tech School
Nursing

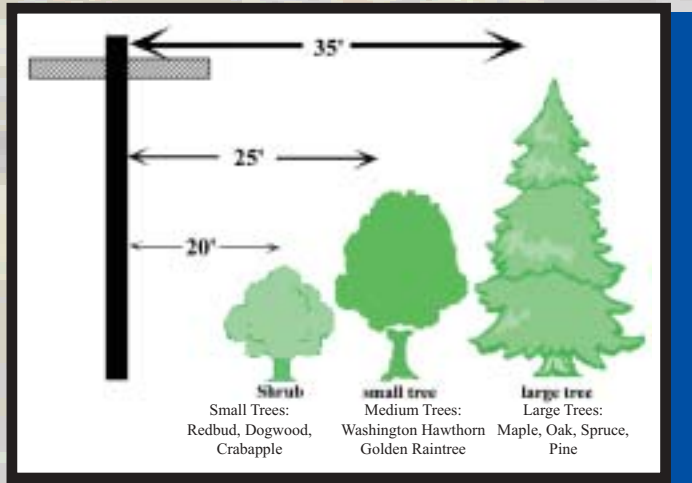
TAKING CARE OF BUSINESS

System Maintenance Prevents Future Problems

During the year we perform system maintenance on the distribution system. That work can best be accomplished in the fall, spring, or in the winter, depending on what needs to be one. During the summer we perform underground inspections of our transformers and cabinets.

This work is very important in making sure that the system stays reliable and able to deliver electricity to you. Again this year, Utility Inspection Services will perform the work. They will have Clark Electric Cooperative contractor signs on their vehicles. Work will be performed on the Colby, Longwood, and Eidsvold substation circuits this summer. Each year, three different substation circuits are done; this allows the entire system to be done every three to four years.

How can you help? As a member of the cooperative, you can make sure that we have access to our underground equipment. Do not plant shrubs, trees, or other



plantings right next to the equipment. If we need to work on the equipment, your plants could get damaged or removed. If you ever have questions, please call and ask; our Operations Department will be happy to help. You can also make sure that trees are not planted in the overhead line's right-of-way. By doing this, you will save the expense of trimming the tree, because we will have to remove it in the future during our annual right-of-way maintenance. But the most important reason for careful planting is that trees and power lines don't go well together. They cause electrical blinks and outages when they are exposed to the line. ■



A nice clean underground cabinet is pictured here. When these cabinets are inspected, they are checked for damage inside and out and checked to see if they are working properly. Our contractor makes sure that proper identification stickers are placed correctly, and most important that equipment is locked. They also make sure that there is no debris around the equipment.



Dick Adler, Manager
John J. Knox, Editor

124 N. Main Street
P.O. Box 190
Greenwood, WI 54437

Your Touchstone Energy® Partner 

e-mail us at info@cecoop.com or at jknox@cecoop.com
WWW.CECOOP.COM

Safety First!

Clark Electric Cooperative has developed a uniform statewide farm wiring program along with other electric cooperatives. The program is entitled, "Safety First!" The purpose is to assist dairy farmers with cost of rewiring projects and to promote safety.

- Grants available up to \$4,000 from Wisconsin Electric Cooperative Association
- Loans available up to \$16,000 from Clark Electric Cooperative

- ★ Dairy Farms Only
- ★ Existing Farmstead
- ★ Pre/Post Inspection
- ★ Electrician's Estimate
- ★ Service Agreement For Length Of Loan
- ★ Credit Eligibility Requirements



Wisconsin Electric Cooperative Association

For More Information Contact:



Clark Electric Cooperative
124 N. Main St., Greenwood, WI.
715-267-6188 or 800-272-6188
Ask for the Operations Department



5.9 Cents/min

Switch
Your Long Distance To Someone You
Know and Trust!

For years, you've relied on us every time you turned on a light. Now, you can rely on us when you make long distance calls.

- A local, community-based provider
- No codes to dial, or term plans
- No monthly fees or minimums
- Six-second incremental billing
- Responsive customer service

We're keeping you connected in more ways than one. Call today for more details.

866-698-0026

CLARK ELECTRIC APPLIANCE & SATELLITE, INC.
111 E. MILLER ST.
GREENWOOD, WI 54437